

WREXHAM ASSOCIATION FOOTBALL CLUB, Limited.

President—MAJOR F. EVELYN SOAMES.

Vice-President—W. B. N. KINGTON, Esq., T.D.

DIRECTORS—

Chairman — H. G. PHILLIPS.

Vice-Chairman — T. H. DODD.

J. T. DAVIES. N. EDWARDS. W. H. EVANS. Ald. E. McMAHON.

J. R. NICHOLAS. F. J. TOMLINSON. T. E. WILLIAMS.

Player/Manager—K. H. BARNES.

Secretary—CLIFFORD LLOYD.

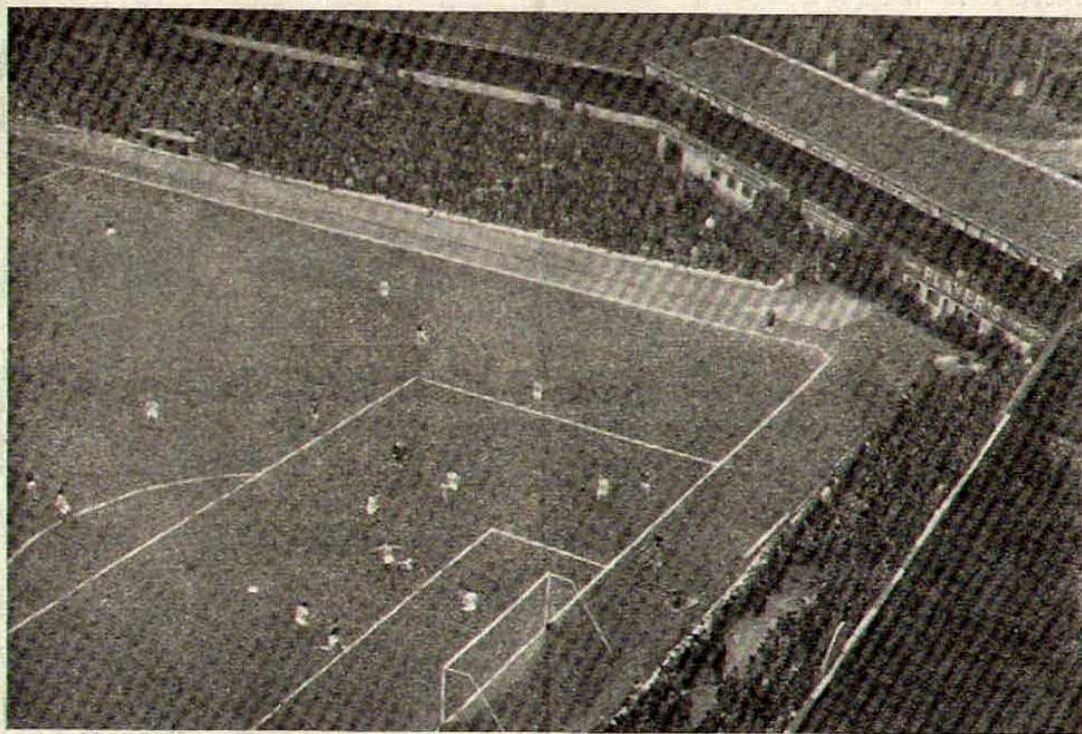
Ground—RACECOURSE, WREXHAM.

Telephone—WREXHAM 2414.

Official Programme

WEDNESDAY, FEBRUARY 27th, 1963.

Price — 3d.



By courtesy of "Wrexham Leader." Pic.—Alan Jones.

Wrexham v. Swindon Town

KICK-OFF — 7-15 p.m.

Published by the Wrexham Association Football Club Supporters' Association, and
Printed by Jones & Williams (Printers) Limited, 14, Regent St., Wrexham. Tel. 2526.

THIRD DIVISION FIXTURES.

Aug.	18—Port Vale	H	0	—	1
	23—Hull City	A	3	—	1
	25—Halifax Town	A	0	—	2
	29—Hull City	H	2	—	0
Sept.	1—Bristol Rovers	H	5	—	2
	4—Brentford (L'gue Cup)	A	0	—	3
	8—Brighton & Hove	A	3	—	1
	11—Northampton Town	A	0	—	8
	15—Carlisle United	H	2	—	1
	17—Queen's Park Rangers	A	2	—	1
	22—Swindon Town	A	0	—	3
	29—Peterborough Utd.	H	4	—	4
Oct.	2—Barnsley	A	1	—	2
	6—Millwall	H	5	—	1
	10—Queens Park Rangers	H	3	—	1
	13—Southend United	A	0	—	2
	20—Colchester United	H	4	—	1
	24—Northampton Town	H	1	—	4
	27—Notts County	A	2	—	3
Nov.	3—(1) Southport	A	1	—	1
	7—Southport (Replay)	H	3	—	2
	10—Coventry City	A	0	—	3
	17—Bradford	H	3	—	1
	24—(2) Barrow	H	5	—	2
Dec.	1—Bristol City	H	2	—	1
	15—Port Vale	A	2	—	2
	26—Shrewsbury Town	A	2	—	4
1963						
Jan.	5—(3) Liverpool	H	0	—	3
Feb.	16—Peterborough	A	3	—	1
	18—(Welsh Cup) Chester	H	1	—	0
	23—Millwall	A	4	—	2
	27—Swindon Town	H			
Mar.	2—Southend United	H			
	5—Carlisle United	A			
	8—Colchester	A			
	11—Reading	A			
	16—Notts County	H			
	20—Shrewsbury Town	H			
	23—Bournemouth	A			
	29—Coventry City	H			
April	6—Bradford	A			
	9—Watford	A			
	12—Crystal Palace	H			
	13—Watford	H			
	15—Crystal Palace	A			
	20—Bristol City	A			
	24—Barnsley	H			
	27—Reading	H			
May	1—Halifax Town	H			
	11—Bristol Rovers	A			
	15—Bournemouth	H			
	18—Brighton & Hove	H			

Cosmetics and Perfumery

Cooper & Davies
HAIR STYLISTS.

Central Arcade, Hope Street
WREXHAM 'Phone—3354.

HORTONS - 6 CHURCH STREET

**Alarm Clocks
Watch Repairs**

Jewellery Repairs and Engravings

Call and See our Large Selection of
Wedding Gifts

For WINTER WARMTH try our—
BEST STAFFS AND NORTH WALES COALS.

Anthracite, Phurnacite, Coalite and All Smokeless Fuels.

J. Saunders & Sons Ltd.

HILL STREET, WREXHAM

Telephone—WREXHAM 3943.

FOR ANYTHING IN WOOD . . .

Wrexham Sawmills

(B. MOSS).

RIVULET ROAD, WREXHAM and at LLANDEGLA

Telephone—WREXHAM 3775.

LLANDEGLA 204.

Suppliers of Home-Grown Timbers sawn or in the log.

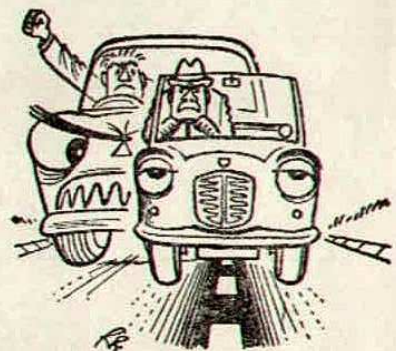
**Denbighshire
Constabulary**
(Traffic Dept.).

*This space has
been kindly
donated by*

Messrs.

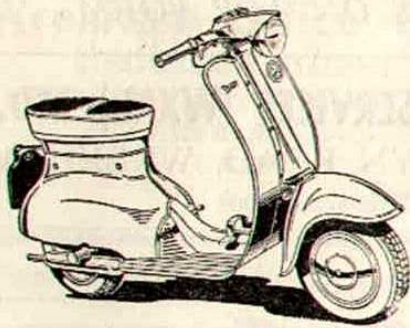
**Lloyd Evans
& Son Ltd.**

Building
Contractors.
WREXHAM



Better Drivers . . .

keep well to the left, except when
they intend to overtake or turn
right.



Main TRIUMPH
DEALER

We have now been
appointed the Main
Triumph Spares
Stockist — Trade &
Retail for N.Wales

Jack Wilkinson

Opposite Odeon :: Wrexham

Telephone—Wrexham 2642.

Kingcrete Products

PRECAST
CONCRETE
SPECIALISTS.

BURTON,
ROSSETT,
'Phone—
Rossett 375

WE HAVE A CONCRETE PROPOSAL!

CONSULT US FOR ALL YOUR
CONCRETE REQUIREMENTS

COVERED WAYS :: WIND BREAKS
'BUS SHELTERS :: PARK SHELTERS
RAISED SILOS :: GARAGES :: GARDEN
SHEDS :: COAL BUNKERS :: POST AND
PANEL WALLING : FENCING : LINTOLS
KERBS : POSTS, Etc.

J. T. Davies & Son

— HIGH-CLASS GROCERY & —
— PROVISION MERCHANTS —
BAKERS and
CONFECTIONERS

Rhosddu Road . . . Wrexham

PEN PICTURES AS SUPPLIED BY SWINDON T. F.C.

MIKE O'HARA (Goalkeeper)—

Joined Swindon from Luton Town last season and was a regular first-team keeper until he was injured at the end of the season. Just 18 he is also available for the Youth Team.

OWEN DAWSON (Right Back)—

Signed during the close season from Portsmouth. Was a former Youth International and is expected to challenge for first-team honours this season.

JOHN TROLLOPE (Left Back)—

A local boy who joined the Swindon ground staff from school. Was selected for the First Team at the beginning of the Season 1960/61, when he was 16 years old and was ever present during the last two seasons.

KEITH MORGAN (Right Half)—

A strong, attacking wing-half, who joined Swindon as a youth player from Westbury. Played in every first team game during 1960/61 and missed only three games last year through injury.

KEN McPHERSON (Centre Half)—

Signed from Newport County in August, 1961, he is a player with a reputation for hard work. Originally a centre-forward, he has proved he has the ability to take over in defence.

BOB WOODRUFF (Left Half)—

Another local born player who came to the town direct from the Swindon Schoolboys' team. Has played at centre-forward and inside-forward in the senior side and his performances have made him a target for several transfer offers.

MIKE SUMMERBEE (Outside Right)—

Born in Cheltenham, he is another product of the Swindon Youth policy. Formerly played at Centre-forward, but has now made the Outside Right berth his own. Another of the players wanted by several Clubs.

ERNIE HUNT (Inside Right)—

Joined the Club's ground staff from school. A member of the First Team at 16 years old, he is a player of outstanding ability for whom the Club has had many offers. A local boy, he was top goal scorer 1960/61 and again last year.

JACK SMITH (Centre Forward)—

Joined the Robins from Watford during the 1960/61 close season. He was formerly with Hartlepool United. A strong, forceful player with the ability to get the unexpected goal.

CLIFF JACKSON (Inside Left)—

Swindon born, he joined the club direct from school. He was a schoolboy International and he made his debut in Swindon's First Team at the age of 17. Has a very powerful shot.

ARNOLD DARCY (Outside Left)—

Joined the Club in November, 1956, from Wigan Athletic. In spite of his lack of inches he is a strong forceful winger with a powerful shot.

Telephones (9 to 5 p.m.)—Chester 25728. Night 35583

NORMAN MULVEY Ltd.

For SPECIALIST DIESEL FUEL INJECTION SERVICES AND HIRE of BEDFORD DORMOBILE CARAVANS

3 and 14 COAL EXCHANGE, CHESTER

ALWAYS ON TOP FORM

ELECTRICAL SERVICES (WXM.) LTD.
18 MAESGWYN ROAD, WREXHAM
Telephone—2008

FOR BEST RESULTS—TRY US

CAMBRIAN SCHOOL OF MOTORING

R.A.C. REGISTERED

MOTOR SCHOOLS ASSOCIATION

WREXHAM
(Colours—Red Shirts, White Facings, White Shorts).

RIGHT LEFT

1
KEELAN

2
JONES (P)

3
McGOWAN

4
BARNES (K)

5
FOX

6
JONES (T)

7
BARNES (R)

8
GRIFFITHS

9
PHYTHIAN

10
WHITEHOUSE

11
COLBRIDGE

REFeree—
Mr. J. A. CATLIN,
Rochdale.

PRIZE BORDER BEER

LINESMEN—
Red Flag—
Mr. W. H. Darlington, Runcorn.
Orange Flag—
Mr. H. Vickers, Crewe.

11
DARCY

10
JACKSON

9
SMITH

8
HUNT

7
SUMMERBEE

6
WOODRUFF

5
McPHERSON

4
MORGAN

3
TROLLOPE

2
DAWSON

1
O'HARA

SWINDON TOWN

LEFT RIGHT

ELWY HOUSE, KING STREET, WREXHAM. 'Phone 2891.

The New OFF LICENCE

EGERTON WINE LODGE
Adjoining KING STREET BUS STATION

—so easy to take a bottle HOME

Wrexham Office Equipment Co., Ltd.

4 EGERTON STREET, WREXHAM. Tel. 2687.

TYPEWRITERS, DUPLICATORS, ADDING MACHINES, CASH TILLS
BOUGHT/SOLD/EXCHANGED/REPAIRED/HIRED.

EVERYTHING FOR THE OFFICE AND SCHOOLS.

ARTIST'S EQUIPMENT, OILS, Etc., Etc.

For MORRIS

R. PRICE

PENRHYN GARAGE, NEW BROUGHTON.

Telephone—Wrexham 3173.

AFTER SALES SERVICE

PAINTING & DECORATING of

House Property, Factories,
Offices, Halls, Churches, Chapels,
Industrial Buildings are carried
out by:—

JOHN HUGHES
(Contractors) Limited,
12a, HOLT STREET,
W R E X H A M .

Telephone—2478.

Secretary's Notes.

WE welcome our supporters to the Racecourse for the first League match since Halifax Town in mid-December. As Mr. Barnes states, I trust we have seen the last of the bad weather because it certainly looks as though our team has touched top form at the right time, and here I would like to congratulate them on behalf of everyone connected with the Club for their wonderful victories at Peterborough and Millwall. Keep it up this evening ! ! !

All our postponed matches have now been re-arranged and the dates are given elsewhere in the programme. I hope you will note them carefully. Those persons who purchased Stand Tickets for any games which were postponed are reminded that they can use these tickets when the game is actually played.

Our Youth Team has been in evidence this week and it is a great honour to our Club to have Alec Lucas and David Powell travelling to Holland to represent Wales Youth next week. Also in the party will be Raymond Mielczarek, who is reserve. To all three, who are on our groundstaff, we offer our congratulations and good wishes.

Micky Metcalf came through a good work-out again last Saturday and is completely fit once more as his hat-trick at the expense of Mossley proved. It's good to see you back on the goal trail, Micky. Our injury list is now in a healthy position and I trust it keeps like that for the remainder of the season.

MATCH BALL
This evening's match ball has been given to the Club by Messrs. Wilson's Tyre Depot and we thank them for their wonderful gesture although this is not the first occasion this firm has assisted the Club. Once again we thank them for their continued generosity.

HOME COMFORT AT REASONABLE COST

ABBOT FURNISHERS

ABBOT STREET AND KING STREET, WREXHAM

Telephone—Wrexham 3951.

FULLY GUARANTEED

FURNITURE : BEDDING : CARPETS : TEXTILES

THORNTON'S

RADIO & ELECTRICAL ENGINEERS : TELEVISION SPECIALISTS

62b REGENT STREET also 4 ODEON BUILDINGS,
BROOK STREET, WREXHAM. Telephone No. 2510.

KNOWLES

(Wrexham) Limited.

COMPLETE SPORTS
OUTFITTERS

Suppliers to F.A. of Wales,
Wrexham A.F.C., and all
Leading Football League
Clubs.

56 Chester St., Wrexham

Telephone—Wrexham 2193.

FOR FISH AND CHIP MEALS TRY—

TURNER'S Fish Cafe

ESTABLISHED OVER 73 YEARS.

OPEN ALL DAY UNTIL 6-0 p.m.

Only One Address—

17 Abbot Street - - Wrexham

KEEP YOURSELF DRY.

Get your RAINCOAT from—

The Bon, Ltd.,

(E. R. HUGHES)

“THE MAN'S SHOP.”

Town Hill - - Wrexham

Telephone—Wrexham 2686.

FURNITURE REMOVAL—
LOCAL AND ANY DISTANCE — ESTIMATES FREE

Thomas Bros. (Removals) Ltd.

Furniture Removers

50 Salop Road - Wrexham

Telephone—Wrexham 2670 and 2673.



For news, pictures, advertisements — — Your local bi-weekly Newspaper, the “WREXHAM LEADER” has no equal. It's team of sports writers present an unbiased picture of local events; the progress of Wrexham A.F.C. is under keen scrutiny. To keep abreast of Wrexham's fortunes, you must follow your “LEADER.”

KEN BARNES TALKING — —

THESE will be my first notes that you have read since the Liverpool Cup-Tie, although on at least four other occasions I have written them optimistically only to be thwarted by the weather. Let's hope we have seen the last of our postponed matches for this season at least because I expect you have all been thoroughly fed up with the standstill. I should stress here, however, that we on the playing side have been equally distressed and our recent friendly match with Huddersfield Town helped us in no little way to recover from our staleness.

Our last two League results, both away victories at Millwall and Peterborough, have certainly given our supporters something to talk about and let me state here and now that both results were correct ones—nothing lucky about them. It just goes to prove that you must get the breaks to get the results. Earlier in the season we played a number of away matches and lost because nothing went right for us. Two examples that spring to mind instantly are Barnsley and Notts County where, in each case, we were defeated by the odd goal scored late in the game immediately after we had missed a glorious chance of going into the lead. In our last two matches we have taken those chances and they have changed the course of the game. Let us hope that this will continue because, believe me, this team of ours has played some great stuff in the two matches I have mentioned.

We shall certainly have to be on our mettle this evening because Swindon Town are lying second in the League and have already defeated us at Swindon. They impressed me then as a really good, workman-like team that would give any side in the Division a run for their money and recent results have proved that I wasn't far wrong in my impressions. Their Manager is Mr. Bert Head and we welcome them to the Racecourse this evening and look forward to a keen struggle. A victory for us this evening would be worth four points to us and I and the rest of the team realise this and will be all out to show you that we have hit top form at the right time. You can help by showing US that you have hit top form with your vocal support. Now come on, you've had a good rest recently, give us everything you've got. I shall be waiting to hear from you. . . .

NEXT HOME MATCH—

SATURDAY, MARCH 2nd—

(The League, Division Three)—

SOUTHEND UNITED

Kick-off 3-15 p.m.

CHESHIRE LEAGUE FIXTURES.

Aug.	18—Wigan Athletic A	3	—	3
	22—Sankey's H	2	—	2
	25—Winsford United H	2	—	1
	29—Bangor City A	0	—	2
Sept.	1—Rossendale (I.L.C.) A	3	—	3
	8—Chester H	4	—	0
	10—Rossendale (Replay) H	3	—	0
	12—Rhyl H	4	—	0
	15—Witton Albion A	2	—	1
	19—(2) Chester (I.L.C.) H	2	—	0
	22—Tranmere Rovers H	1	—	2
	29—Stalybridge Celtic A	2	—	1
Oct.	1—Ellesmere Port Town	H	3	—	2
	6—Stafford Rangers A	2	—	3
	8—Tranmere Rovers A	0	—	4
	13—Northwich Victoria H	1	—	3
	20—Oswestry Town A	2	—	0
	27—Altrincham H	1	—	0
Nov.	3—Winsford United A	0	—	2
	10—Congleton Town H	3	—	0
	14—Runcorn H	2	—	4
	17—Hyde United A	1	—	2
Dec.	1—Buxton A	0	—	3
	8—Stalybridge Celtic H	2	—	3
	15—Wigan Athletic H	4	—	1
1963					
Jan.	14—Chorley (I.L.C.) A	0	—	4
	—Mossley A	1	—	4
Feb.	4—Bangor City H	3	—	1
	13—Macclesfield H	3	—	1
	16—Hyde United H	0	—	4
	23—Mossley H	3	—	1
	25—Oswestry Town H	3	—	1
Mar.	2—Sankey's A			
	9—Runcorn A			
	16—Congleton A			
	23—Stafford Rangers H			
	30—Altrincham A			
April	6—Frickley Colliery H			
	12—Chester A			
	15—Macclesfield A			
	20—Witton Albion H			
	22—Buxton H			
May	1—Frickley Colliery A			
	8—Rhyl A			
	11—Ellesmere Port A			

The Spot for Good Printing ●

LOOK

AT THE IMPRINT ON
THE FRONT PAGE !!

The Fare Way Restaurant

Seating _____ Quality and
250 _____ Quick Service

OUTSIDE CATERING FOR BALLS, DANCES AND DINNERS

Distance no Object. BANQUETS AND WEDDINGS a Speciality

APPLY—Mrs. Megan Evans, The Fare Way, Centenary Buildings,
King Street, Wrexham. Telephone—Wrexham 4687

*Why not Travel to AWAY MATCHES
With those who TAKE THE TEAM*

— TRY —

**Phillips Coaches
Rhostyllen**

Vincent Greenhous Ltd.

*Contact Dan Sullivan who will be happy to
fit your car in to be washed during the match,
with the latest AUTO WASH EQUIPMENT.*

PHONE:— 3431.

Wrexham Scooters

(W. BARON)

NORTH WALES' LEADING SCOOTER SPECIALISTS

28 KING STREET, WREXHAM. Telephone—Wrexham 2495

Accessories : Spares : Sales : Service : Satisfaction

SAVE SAFELY WITHOUT WORRY with the

B O R O U G H Building Society

YOU CAN START WITH AS LITTLE AS 6d.
PLEASE ASK FOR LEAFLETS.

Particulars from Local Branch—

8, Egerton Street - Wrexham

AGENCIES THROUGHOUT NORTH WALES
Member of the Building Societies Association

Wrexham A.F.C. Supporters' Association Notes.

By "Cee Tee,"

I wonder if by chance we are returning back to normal once again. It should give us much pleasure to welcome our team on to the field tonight, after two great performances away from home. This evening we tackle Swindon Town and we extend to them and their supporters a warm welcome to the 'Course. I should imagine that everyone's enthusiasm had been bottled up so long that we should all explode with encouragement tonight and so help the "lads" to gain another two points towards promotion.

They managed two great wins away without vocal support, so with all the inspiration which should be forthcoming this evening, it should not be too difficult, providing ground conditions do not upset good football. So once again after a long lay-off — UP THE TOWN.

The Golden Kitchen
CHINESE RESTAURANT

DELICIOUS

CHINESE AND ENGLISH DISHES

WEDDINGS & SOCIAL FUNCTIONS

TABLES RESERVED

Three Course Business Lunch served DAILY between 12 noon and 2-0 p.m.

1-2 Charles Street, Wrexham

Telephone—Wrexham 4473.

HENS and CHICKENS wanted—

BEST PRICES—

Weighed and cash paid on the Farm.

R. WILLIAMS

Snowhill, Bulchgwyn, Nr. Wrexham

Telephone—Coedpoeth 488.

Holmes Plant Hire

SITE CLEARING
EXCAVATION
BULLDOZING
DITCHING
Etc., Etc.



Tel. — Wrexham 2744

THE GRANGE, NEW ROAD, RHOSDDU

T. C. Jones & Son



Premier Garage
COEDPOETH
Nr. WREXHAM

Telephone—
Coedpoeth 238

YOUR STANDARD-TRIUMPH DEALER

THE LEAGUE — DIVISION III.

	P.	W.	D.	L.	F.	A.	Pts.
Peterborough	28	14	6	8	66	47	34
Swindon	27	12	9	6	55	34	33
Coventry	27	11	11	5	53	42	33
Bournemouth	26	11	10	5	37	26	32
Notts County	27	13	6	8	40	42	32
Northampton	26	12	7	7	57	40	31
Watford	27	14	3	10	62	47	31
Southend	26	13	3	10	46	46	29
Queens Pk. R.	26	11	6	9	53	41	28
Shrewsbury	27	10	8	9	62	54	28
Wrexham	25	13	2	10	53	52	28
Port Vale	25	10	7	8	35	30	27
Hull	25	11	5	9	46	40	27
Bristol City	27	9	8	10	58	55	26
Bristol Rovers	26	10	5	11	44	52	25
Barnsley	26	9	5	12	36	40	23
Millwall	26	6	11	9	49	55	23
Brighton	31	7	9	15	43	62	23
Colchester	26	7	9	10	43	56	23
Bradford	26	7	8	11	39	54	22
Halifax	27	6	9	12	36	57	21
Reading	26	9	2	15	45	49	20
Crystal Palace	26	5	9	12	28	42	19
Carlisle	25	4	8	13	30	53	16

Drink and enjoy . .



**the . . .
popular beer**